

Fiscal Year 2022

Operating Budget Request

Judicial Branch of the Virgin Islands & Judicial Council of the Virgin Islands



June 1, 2021

TABLE OF CONTENTS

TRANSMITTAL..... 4

RESOLUTION..... 6

ORGANIZATION 7

REQUEST 8

JUDICIAL COUNCIL..... 11

JUDICIAL COUNCIL EXPENDITURES 12

JUDICIAL COUNCIL PERSONNEL..... 13

JUDICIAL BRANCH EXPENDITURES BY OBJECT 14

JUDICIAL BRANCH EXPENDITURE SCHEDULES 15

JUDICIAL BRANCH EXPENDITURE CAPITAL BUDGET 16

JUDICIAL BRANCH EXPENDITURE OPERATING EXPENSE MANAGEMENT 18

JUDICIAL BRANCH PERSONNEL LISTINGS- SUPREME COURT..... 19

JUDICIAL BRANCH PERSONNEL LISTINGS- SUPERIOR COURT 20

JUDICIAL BRANCH PERSONNEL LISTINGS- ADMINISTRATIVE SERVICES..... 25



Supreme Court of The Virgin Islands

June 1, 2021

Honourable Albert A. Bryan Jr.
Governor of the United States Virgin Islands
Government House, 21-22 Kongens Gide
St. Thomas, U. S. Virgin Islands 00802

Honourable Donna Frett-Gregory
President, 34th Legislature of the Virgin Islands
Capitol Building- Old Barracks Yard
St. Thomas, U. S. Virgin Islands 00802

RE: Judicial Branch and Judicial Council Fiscal Year 2022 Budget Requests, Post Audit Submission, and Fiscal Year 2020 Annual Report of the Virgin Islands Court and Judiciary System

Dear Governor Bryan and Senate President Frett-Gregory:

Enclosed are copies of the Fiscal Year 2021 Budget Request for the Judiciary of the Virgin Islands and the Judicial Council of the Virgin Islands and the Post Audit Submission along with copies of the 2020 *Annual Report on the U. S. Virgin Islands Court and Judiciary System*, as required by 4 V. I. C. §31 (D)(4). This budget request covers funding for the operations of the entire judicial system, including both the Supreme Court and the Superior Court. The request was duly approved and adopted by the Judicial Management Advisory Council at a duly noticed meeting held on May 27, 2020.

For Fiscal Year 2022, the Judicial Branch of the Virgin Islands requests an appropriation of \$44,791,444, with an accompanying request for the Judicial Council in the amount of \$129,100. With specific regards to the Judicial Branch request, we recognize that it represents a 7.8% increase from our FY 2021 budget request and a significant increase over the \$35, 246, 781 funding appropriation in place for the past four years. However, the Judicial Branch must continually meet its obligation to inform both the Executive and Legislative Branches of what the needs of the Judiciary are, and the dire consequences of those needs not being met year over year: the effect of years of deferred maintenance on courthouses which are owned by GVI; the inability to adequately and holistically conduct infrastructure repairs to all facilities; and high turnover due to the inability to remain competitive in the employment market resulting in the loss of staff mostly to Executive Branch entities capable of offering higher salaries.

The Judiciary will cooperate fully in the budget process. Should you require anything further, please do not hesitate to contact me at 340.774.2237.

Sincerely,

A handwritten signature in blue ink, appearing to read 'Rhys S. Hodge', is written over the printed name.

Rhys S. Hodge
Chief Justice

Enclosures (2)

cc: Hon. Harold W. L. Willocks, Presiding Judge, Superior Court
Hon. Kurt A. Violet, Chair of the Committee on Finance
Regina Petersen, Administrator of Courts
Jenifer O'Neal, Director Designee, OMB
Post Audit Division



Supreme Court of The Virgin Islands

VIRGIN ISLANDS

JUDICIAL MANAGEMENT ADVISORY COUNCIL

RESOLUTION NO. 2021-0002

RELATIVE TO APPROVING THE JUDICIARY OF THE VIRGIN ISLANDS

BUDGTE FOR FISCAL YEAR 2022

WHEREAS, the proposed Fiscal Year ("FY") 2022 for the Judiciary of the Virgin Islands was presented by the Administrator of Courts, and The Chief Financial Officer at the Judicial Management Advisory Council meeting on May 27, 2021; and

WHEREAS, the FY 2021 Judiciary of the Virgin Islands proposed budget was thoroughly reviewed, studied and discussed by the members of the Judicial Management Advisory Council;

NOW THEREFORE, BE IT RESOLVED, that the FY 2021 Judiciary of the Virgin Islands' Budget, a copy of which is attached as an exhibit hereto, is APPROVED.

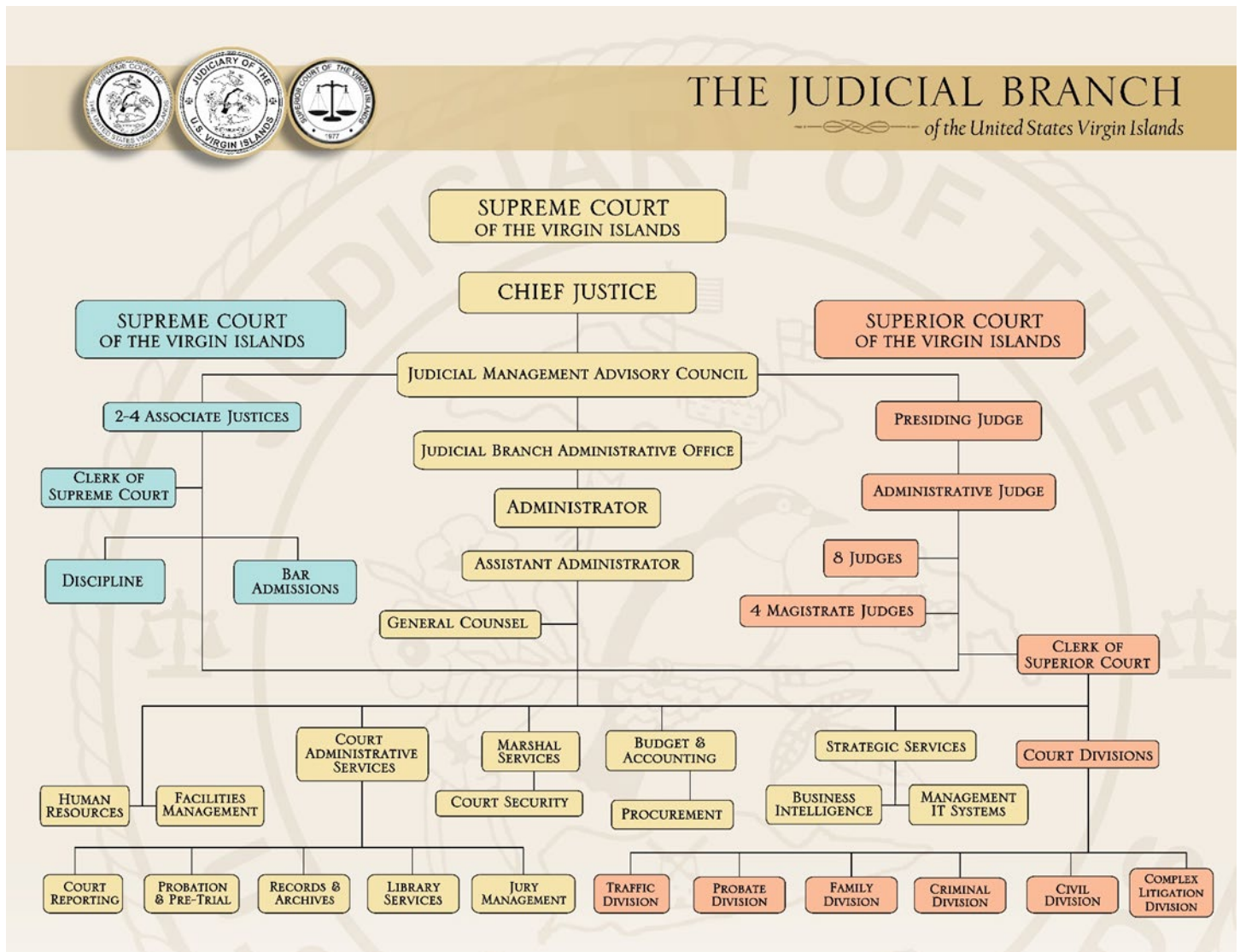
DULY ADOPTED by the Judicial Management Advisory Council at a duly noticed meeting on May 27, 2020.

A handwritten signature in blue ink, appearing to read "Rhys S. Hodge", is written over a horizontal line.

Rhys S. Hodge, Chair

Organization

Pursuant to Act No. 7888, the Judicial Branch of the Virgin Islands was unified administratively on July 30, 2016. Administrative Unification resulted in centralized governance and services for the local judiciary as shown below:



Following unification and pursuant to amendments to VISCR 101, the Supreme Court established the Judicial Branch Administrative Office (JBAO). This Office is headed by an Administrator of Courts, who is appointed by the Chief Justice. Under the direction of the Chief Justice, the primary function of the Judicial Branch Administrative Office is the management and supervision of the day-to-day internal non-judicial operations of the branch. Specifically, these duties include developing, implementing, coordinating, and enforcing all non-judicial matters throughout the branch and are related to policies, standards, procedures, programs, and personnel. JBAO, subject to the authority of the Chief Justice, is also charged with assisting the Chief Justice in the preparation and publishing of the judiciary's annual report and importantly, the preparation of the annual budget request for the Judicial Branch.

REQUEST

For Fiscal Year 2022, the Judicial Branch of the Virgin Islands requests an appropriation in the amount of \$44,791,444 along with a request of \$129,100 to fund the operations of the Judicial Council.

Judicial Branch

Description	Amount	%
Personnel Services	\$ 22,948,032	51%
Fringe Benefits	<u>11,150,271</u>	25%
Total Personnel Services	<u>\$ 34,098,303</u>	77%
Capital Outlays	\$ 3,642,278	8%
Supplies	683,717	2%
Utility Services and Communications	2,120,000	5%
Other Services & Charges	<u>4,247,146</u>	9%
TOTAL PROPOSED BUDGET	<u>\$ 44,791,444</u>	100%

Judicial Council

Description	Amount	%
Personnel Services	\$ 77,475	60%
Fringe Benefits	<u>51,625</u>	40%
Total Personnel Services	<u>\$ 129,100</u>	100%
Capital Outlays	\$ -	
Supplies	-	
Utility Services and Communications	-	
Other Services & Charges	<u>-</u>	
TOTAL PROPOSED BUDGET	<u>\$ 129,100</u>	100%

Applicable Guidelines

The budget is a critical tool in exercising and achieving to the Judicial Branch's vision, mission, goals, and strategies. In today's economic environment, governments must plan and accurately project expenditures on an annual basis and beyond and must be able to demonstrate agility to navigate the challenges of reduced funding and sustainability.

To this end, the Judicial Branch's budget focuses on the Core Strategies and Objectives of the Courts: Judicial Excellence, Public Trust, and Confidence, and Innovative Leadership. The budgeting process is a valuable tool that will lead the Courts towards achieving these goals.

The Key Areas of the Judicial Branch budget are:

- Personnel Management
- Operating Expense Management
- Contract Services
- Facility Management and Maintenance
- Performance Analysis
- Capital Projects

The annual budget for the Judiciary begins on October 1st and ends on September 30th. The Budget is prepared utilizing schedules which include current year projections for the remaining months up to September 30th and the projected expenses by category for the upcoming Fiscal Year. Where applicable, in the schedules that follow, each projected expense includes a brief explanation of the expenditure within the comments section.

PERSONNEL MANAGEMENT

The largest expense category of the Judiciary's budget is Salaries and Fringe Benefits, and the development of the personnel budget includes personnel listings for the three entities that make up the Branch: the Supreme Court of the Virgin Islands, the Superior Court of the Virgin Islands, and the Judicial Branch Administrative Office, as well as for the Judicial Council. The personnel listings include and consider the following:

1. Number of approved Full Time Employees
2. Number of approved Contract Employees
3. Vacant Positions (Funded and Unfunded)
4. Attrition – Planned Retirements
5. Optimal Staffing Levels by Division
6. Interns and Volunteers
7. Compensatory Time Balances
8. Step and Grade Analysis
9. Succession Planning
10. National Center for State Courts Compensation Study

Judicial Council

The Appellate Division of the District Court of the Virgin Islands served as the appellate court for processing cases appealed from the Superior Court of the Virgin Islands prior to the establishment of the Supreme Court of the Virgin Islands, and historically, the Judicial Council has acted as the vehicle through which the Territorial Government has provided assistance to the District Court. Since the acceptance of jurisdiction in 2007 by the Supreme Court of the Virgin Islands, no new cases have been filed in the Appellate Division. However, the Appellate Division continues to work towards the conclusion of the cases pending prior to the establishment of the Supreme Court.

In addition to the conclusion of the cases pending before the Appellate Division, the District Court Library continues to provide services to the members of the local Bar and the community at large. However, since there are no other expenses related to the administration of the pending appellate caseload, the Fiscal Year 2022 Judicial Council request is solely to cover the salaries, a moderate 5% increase and associated fringe benefits of 2 Law Librarians.

Judicial Council			
Summary of Expenditures by Object			
DESCRIPTION	October 1, 2019 - Sept. 30, 2020		October 1, 2021 - Sept. 30, 2022
			Request
General Fund Appropriation	116,083		129,100
Grant Funding	0		0
PERSONNEL SERVICES			
SALARIES	63,974		66,675
OVERTIME			
LUMP SUM PAYMENTS			
HOLIDAY PAY	4,303		5,800
SICK LEAVE	1,738		2,100
ANNUAL PAY, OTHER	2,762		2,900
CAPITAL OUTLAYS			
FRINGE BENEFITS			
RETIREMENT	16,604		18,207
F.I.C.A	4,512		4,804
MEDICARE	1,055		1,124
HEALTH INSURANCE PREMIUM	21,051		27,390
WORKERS COMP. PREMIUMS	84		101
UNEMPLOYMENT COMPENSATION			
ALL OTHER:			
EMPLOYEE & INCENTIVE AWARDS			
SUPPLIES			
OTHER SERVICES & CHARGES			
UTILITY SERVICES			
TOTAL	116,083		129,100

Personnel

Judicial Council									
Summary of Personnel Cost									
POSITION TITLE	District	STATUS	ANNUAL SALARY FISCAL YEAR 2022	FICA @ 7.65% (2021 SS Salary Cap is \$142,800)	SOCIAL SECURITY @ 6.20 % Ceiling of \$142,800	MEDICARE @ 1.45%	EMPLOYER COST RETIREMENT @ 23.5% ANNUAL	HEALTH INSURANCE PER PP	HEALTH INSURANCE ANNUAL
LAW LIBRARIAN TECHNICIAN	STX	F	35,434	2,711	2,197	514	8,327	454	13,695
LAW LIBRARIAN TECHNICIAN	STT	F	42,041	3,216	2,607	610	9,880	454	13,695
TOTAL BOTH DISTRICTS		2	\$ 77,475	\$ 5,927	\$ 4,803	\$ 1,123	\$ 18,207	\$ 908	\$ 27,390

Amount
\$ 77,475
\$ 5,927
\$ 18,207
\$ 27,390
\$ 128,999

JUDICIAL BRANCH. The two main components of the FY 2022 budget are staff retention and the continued repair, replacement and hardening of all Judicial Branch facilities and its Information Technology infrastructure. Over the course of several years, many major projects have been delayed and/or expensed or planned in a phased process due to funding. Additionally, the Judiciary is experiencing high employee turnover as salaries are no longer competitive in critical operational areas. Accordingly, this request contemplates an across the board 5% increase for regular employees and the final installment of a phased increase for Judicial Officers.

JUDICIAL BRANCH				
Summary of Expenditures by Object				
DESCRIPTION		October 1, 2019 - September 30, 2020		October 1, 2021 - September 30, 2022
				Request
General Fund Appropriation		35,246,781		44,791,444
Grant Funding				
PERSONNEL SERVICES		18,938,915		22,948,032
FRINGE BENEFITS		7,852,170		11,150,272
CAPITAL OUTLAYS		1,937,508		3,642,278
SUPPLIES		756,810		683,717
UTILITY SERVICES		2,215,955		2,120,000
OTHER SERVICES & CHARGES		3,266,610		4,237,146
ALL OTHER:				
COMMISSION ON JUDICIAL CONDUCT				2,500
ACCESS TO JUSTICE COMMISSION				2,500
BOARD OF PROFESSIONAL RESPONSIBILITY & UPL				5,000
TOTAL		34,967,967	*	44,791,444
<i>*Includes CARES Act Funds, Grant Funds in FY2020 for the Judicial Branch.</i>		\$ 1,000,000.00		
<i>*Includes Voluntary Reduction in FY2020 Yielding Ceiling of \$34,189,378</i>		\$ (1,057,403.43)		

JUDICIAL BRANCH
Schedule of Expenditures Personnel Costs

DESCRIPTION		
Fund	Item	Request
	PERSONNEL SERVICES	
General Fund	REGULAR SALARIES/LUMPSUM/HOLIDAY	\$ 21,998,032
Federal Fund	OTHER PERSONAL SERVICES:	
General Fund	COMPENSATION FOR ATTORNEYS, EXPERTS, ETC.	700,000
General Fund	JURY FEES	250,000
General Fund	CONSULTANT FEES	
	TOTAL PERSONNEL, PERSONAL SERVICES & OTHER	\$ 22,948,032
	FRINGE BENEFITS	
General Fund	RETIREMENT	\$ 4,330,459
General Fund	ADEC (Actuarially Determined Employer Contributions)	350,000
General Fund	F.I.C.A /MEDICARE	1,594,007
General Fund	HEALTH INSURANCE	4,724,775
General Fund	WORKERS COMPENSATION	28,000
General Fund	UNEMPLOYMENT COMPENSATION	10,500
General Fund	EMPLOYEE INCENTIVES AND AWARDS	112,530
	TOTAL FRINGE	11,150,271
	TOTAL PERSONNEL SERVICES AND FRINGE	\$ 34,098,303
	<i>Personnel by Organization</i>	
	Judicial Branch Administrative Offices	
	Salary	\$ 11,059,251
	Lumpsums/Separations	250,000
	FICA/Medicare- 2020 base rate \$142,800	842,814
	Retirement	2,413,527
	Health Insurance with Projected 5% Increase	2,629,440
	ADEC (Actuarially Determined Employer Contributions)	350,000
	Employee Incentives: Service Awards, Employee of the Year	112,530
	Summer Employment-Interns	124,160
	Unemployment/Worker's Compensation: Based on Previous years experience	38,500
	Other Personnel Services: Attorney Fees, Experts, Jury Expenses	950,000
	Total	\$ 18,770,222
	Supreme Court	
	Salary	\$ 2,365,957
	FICA/Medicare- 2020 base rate \$142,800	163,131
	Retirement	374,266
	Health Insurance with Projected 5% Increase	342,375
	Total	\$ 3,245,729
	Superior Court	
	Salary	\$ 8,198,663
	FICA/Medicare- 2020 base rate \$142,800	588,064
	Retirement	1,542,666
	Health Insurance with Projected 5% Increase	1,752,960
	Total	\$ 12,082,353

CAPITAL BUDGET

Capital Budgeting is defined as an important budgetary tool to plan for the acquisition of capital assets, which are resources that have an expected lifetime that extends beyond the acquisition year. Capital Budgeting must be incorporated within the Operating Budgeting process. Major infrastructure projects must be strategically tied to the overall Judiciary's goals and objectives. In the wake of Hurricane's Irma and Maria, several major facility projects must be prioritized over the next 3 – 5 years. In addition to the Hurricane related repairs that have been deferred due to funding constraints, the COVID-19 pandemic has also resulted in increased spending in this area, as facilities must be maintained and regularly sanitized in accordance with guidelines established by the Centers of Disease Control.

In order to prioritize Capital Projects based on funding availability, the Judiciary has employed the following criteria in the vetting process:

- Public Benefit
- Safety, Security, Risk Management
- Cost
- Priority (Rank)
- Rate of Return on Investment

JUDICIAL BRANCH

Schedule of Capital Outlays

DESCRIPTION

Fund	Item			Request
	CAPITAL OUTLAYS			
General Fund	MACHINERY & EQUIPMENT			\$ 37,500
		<i>Replacement Riding Lawn Mower & Replacement Instruments Rising Stars</i>	37,500	
General Fund	COMPUTER EQUIPMENT			\$ 88,778
		<i>Dell Unity 380 XT Upgrades STT/STX, Monitors</i>	88,778	
General Fund	VEHICLES			\$ -
General Fund	TECHNOLOGY PROJECT			\$ 26,000
		<i>Asset and Fleet Management Software</i>	26,000	
	ALL OTHER:			
General Fund	LAND			
General Fund	BUILDING IMPROVEMENTS			\$ 3,310,000
		<i>St. Croix Roofing Project</i>	1,500,000	
		<i>Staff Bathroom Renovations (STT/STX)</i>	500,000	
		<i>Air Conditioners Chill Water Units Pipe Replacements</i>	500,000	
		<i>Air Conditioner Units Thermostats and Dampers</i>	100,000	
		<i>Frederiksted Roof Rehab</i>	275,000	
		<i>Six Doors and Door Frame Rehab</i>	120,000	
		<i>Paint Farrelly Complex</i>	200,000	
		<i>Led Light Replacement</i>	60,000	
		Magistrates Court Tiling	25,000	
		Supervisors Lot Lighting	15,000	
		Tiling of Marshal's Office	15,000	
General Fund	NEW AND REPLACEMENT VOLUMES			\$ 180,000
		TOTAL CAPITAL OUTLAYS		\$ 3,642,278

OPERATING EXPENSE MANAGEMENT

Operating Expenses are the core expenditures within the organization and will be reported based on existing levels, and adjusted based on goals and objectives of the Court, funding availability, and necessities. The Budget and Accounting Services Division will generate the historical information to determine the annual spending limits. The information will be analyzed to determine the best strategy to streamline services and costs for the Judiciary by the leadership team.

JUDICIAL BRANCH				
Schedule of Expenditures Supplies, Utilities, Other Services				
DESCRIPTION				
Fund	Item			Request
	SUPPLIES			
General Fund	OFFICE SUPPLIES			\$ 400,000
		<i>Office Supplies, Drinking Water, Toner Purchases, Computer Supplies</i>	<i>250,000</i>	
		<i>Pandemic related Janitorial Supplies</i>	<i>150,000</i>	
General Fund	OPERATING SUPPLIES & OTHER			\$ 283,717
		<i>Gasoline, Vehicle Repairs and Maintenance</i>	<i>150,000</i>	
		<i>Small Tools and Minor Equipment, including COVID-19 purchases</i>	<i>133,717</i>	
	TOTAL SUPPLIES			\$ 683,717
	UTILITY SERVICES			
General Fund		<i>Electricity and Water</i>		\$ 1,550,000
General Fund		<i>Telephone and Internet</i>		\$ 570,000
	TOTAL UTILITIES			\$ 2,120,000
	OTHER SERVICES & CHARGES			
General Fund	PROFESSIONAL SERVICES	<i>Contract Services Judicial Rules, Legal Services</i>		\$ 272,410
General Fund	COMPUTER SERVICES	<i>Software and Hardware Maintenance, License Renewals, etc.</i>		\$ 1,143,309
General Fund	TRAVEL			\$ 130,000
General Fund	TRANSPORTATION - NOT TRAVEL			\$ 50,000
General Fund	ADVERTISING AND PROMOTION			\$ 160,000
General Fund	PRINTING AND BINDING			\$ 65,000
General Fund	INSURANCE	<i>Increase in Premiums due to Hurricanes Irma and Maria</i>		\$ 400,000
General Fund	REPAIRS AND MAINTENANCE			\$ 365,000
General Fund	RENTAL - LAND/BUILDING			\$ 854,500
General Fund	RENTAL - MACHINES/EQUIPMENT			\$ 200,000
General Fund	TRAINING			\$ 337,027
General Fund	SECURITY			\$ 243,900
General Fund	ALL OTHER:			
	COMMISSION ON JUDICIAL CONDUCT			\$ 2,500
	ACCESS TO JUSTICE COMMISSION			\$ 2,500
	BOARD OF PROFESSIONAL RESPONSIBILITY & UPL			\$ 5,000
General Fund	MISCELLANEOUS			\$ 16,000
	TOTAL OTHER SERVICES AND CHARGES			\$ 4,247,146

Personnel Schedules

DIVISION	VACANCY STATUS	POSITION TITLE	SALARY	TERS	FICA	HEALTH INSURANCE
BAR ADMISSIONS						
BAR ADMISSIONS-1400	FILLED	BAR ADMISSIONS ANALYST	47,973.45	11,273.76	3,669.97	13,695.00
BAR ADMISSIONS-1400	FILLED	DIRECTOR OF BAR ADMISSIONS	78,257.55	15,275.00	5,986.70	13,695.00
SUBTOTAL			\$ 126,231	\$ 26,549	\$ 9,657	\$ 27,390
CLERK OF THE COURT						
CLERK OF THE COURT-1400	FILLED	CLERK OF THE COURT	136,680.60	32,119.94	9,958.00	13,695.00
CLERK OF THE COURT-1400	FILLED	DEPUTY CLERK II	42,156.45	9,906.77	3,224.97	13,695.00
CLERK OF THE COURT-1400	FILLED	DEPUTY CLERK II	51,364.95	12,070.76	3,929.42	13,695.00
CLERK OF THE COURT-1450	VACANT (TBF)	DEPUTY CLERK II	39,170.00	9,204.95	2,996.51	13,695.00
CLERK OF THE COURT-1450	FILLED	DEPUTY CLERK II	40,125.75	9,429.55	3,069.62	13,695.00
CLERK OF THE COURT-1450	FILLED	STAFF ATTORNEY	93,024.75	15,275.00	7,116.39	13,695.00
SUBTOTAL			\$ 402,523	\$ 88,007	\$ 30,295	\$ 82,170
JUSTICES						
JUSTICE CABRET	FILLED	APPELLATE LAW CLERK	70,329.00	-	5,380.00	13,695.00
JUSTICE CABRET	FILLED	APPELLATE LAW CLERK	73,889.00	-	5,653.00	13,695.00
JUSTICE CABRET	FILLED	APPELLATE LAW CLERK	73,889.00	-	5,653.00	13,695.00
JUSTICE CABRET	FILLED	ASSOCIATE JUSTICE	226,564.00	53,242.54	11,920.00	13,695.00
JUSTICE CABRET	FILLED	JUDICIAL SECRETARY	71,422.05	15,275.00	5,463.79	13,695.00
JUSTICE HODGE	FILLED	APPELLATE LAW CLERK	70,329.00	-	5,380.00	13,695.00
JUSTICE HODGE	FILLED	APPELLATE LAW CLERK	70,329.00	-	5,380.00	13,695.00
JUSTICE HODGE	FILLED	CHIEF JUSTICE	231,564.00	54,417.54	11,993.00	13,695.00
JUSTICE HODGE	FILLED	JUDICIAL SECRETARY	75,255.60	15,275.00	5,757.05	13,695.00
JUSTICE HODGE	FILLED	SENIOR LAW CLERK AND SPECIAL ASSISTANT TO CHIEF JUSTICE	103,871.25	-	7,946.15	13,695.00
JUSTICE SWAN	FILLED	APPELLATE LAW CLERK	81,510.45	-	6,235.55	13,695.00
JUSTICE SWAN	FILLED	APPELLATE LAW CLERK	81,510.45	-	6,235.55	13,695.00
JUSTICE SWAN	FILLED	APPELLATE LAW CLERK	81,510.45	-	6,235.55	13,695.00
JUSTICE SWAN	FILLED	ASSOCIATE JUSTICE	226,564.00	53,242.54	11,920.00	13,695.00
JUSTICE SWAN	FILLED	JUDICIAL SECRETARY	73,208.10	15,275.00	5,600.42	13,695.00
SUBTOTAL			\$ 1,611,745	\$ 206,728	\$ 106,753	\$ 205,425
OFFICE OF DISCIPLINARY COUNSEL						
OFFICE OF DISCIPLINARY COUNSEL	FILLED	CHIEF DISCIPLINARY COUNSEL	120,458.10	28,307.65	8,776.00	13,695.00
OFFICE OF DISCIPLINARY COUNSEL	VACANT (TBF)	DEPUTY CHIEF DISCIPLINARY COUNSEL	105,000.00	24,675.00	7,650.00	13,695.00
SUBTOTAL			\$ 225,458	\$ 52,983	\$ 16,426	\$ 27,390
			\$ 2,365,956.95	\$ 374,266.01	\$ 163,130.64	\$ 342,375.00

DIVISION	DISTRICT	VACANCY STATUS	POSITION TITLE	SALARY	TERS	FICA	HEALTH INSURANCE
APPELLATE DIVISION							
APPELLATE DIVISION-1246	STT	VACANT (TBF)	APPELLATE LAW CLERK	66,940.00	-	5,121.00	13,695.00
APPELLATE DIVISION-1296	STX	FILLED	SENIOR LAW CLERK	85,585.50	-	6,547.29	13,695.00
SUBTOTAL				\$ 152,526	\$ -	\$ 11,668	\$ 27,390
CASHIER'S OFFICE							
CASHIER'S OFFICE-1221	STT	FILLED	CASHIER	29,016.75	6,818.94	2,219.78	13,695.00
CASHIER'S OFFICE-1221	STT	VACANT (TBF)	CASHIER	30,485.70	7,164.14	2,332.16	13,695.00
CASHIER'S OFFICE-1221	STT	FILLED	CHIEF CASHIER	42,046.20	9,880.86	3,216.53	13,695.00
CASHIER'S OFFICE-1221	STT	FILLED	CASHIER	45,228.75	10,628.76	3,460.00	13,695.00
CASHIER'S OFFICE-1271	STX	FILLED	CASHIER	44,152.50	10,375.84	3,377.67	13,695.00
CASHIER'S OFFICE-1271	STX	FILLED	CHIEF CASHIER	59,410.05	13,961.36	4,544.87	13,695.00
SUBTOTAL				\$ 250,340	\$ 58,830	\$ 19,151	\$ 82,170
CIVIL DIVISION							
CIVIL DIVISION-1222	STT	FILLED	COURT CLERK II	32,924.85	7,737.34	2,518.75	13,695.00
CIVIL DIVISION-1222	STT	FILLED	COURT CLERK II	32,924.85	7,737.34	2,518.75	13,695.00
CIVIL DIVISION-1222	STT	FILLED	COURT CLERK II	34,591.20	8,128.93	2,646.23	13,695.00
CIVIL DIVISION-1222	STT	FILLED	COURT CLERK II	37,748.05	7,930.79	2,581.73	13,695.00
CIVIL DIVISION-1222	STT	FILLED	COURT CLERK II/INTERPRETER	52,603.95	12,361.93	4,024.20	13,695.00
CIVIL DIVISION-1222	STT	FILLED	COURT CLERK SUPERVISOR	55,070.40	12,941.54	4,212.89	13,695.00
CIVIL DIVISION-1272	STX	FILLED	COURT CLERK I	32,029.20	7,526.86	2,450.23	13,695.00
CIVIL DIVISION-1272	STX	FILLED	COURT CLERK II	33,748.05	7,930.79	2,581.73	13,695.00
CIVIL DIVISION-1272	STX	FILLED	COURT CLERK II	34,591.20	8,128.93	2,646.23	13,695.00
CIVIL DIVISION-1272	STX	FILLED	COURT CLERK II	39,137.70	9,197.36	2,994.03	13,695.00
CIVIL DIVISION-1272	STX	FILLED	COURT CLERK SUPERVISOR	57,858.15	13,596.67	4,426.15	13,695.00
CIVIL DIVISION-1272	STX	FILLED	COURT CLERK III	60,083.10	14,119.53	4,596.36	13,695.00
SUBTOTAL				\$ 499,311	\$ 117,338	\$ 38,197	\$ 164,340
CLERK'S OFFICE							
CLERK'S OFFICE-1223	STT	FILLED	PBX OPERATOR/RECEPTIONIST	29,068.20	6,831.03	2,223.72	13,695.00
CLERK'S OFFICE-1223	STT	FILLED	ADMINISTRATIVE OFFICER II	51,351.30	12,067.56	3,928.37	13,695.00
CLERK'S OFFICE-1223	STT	FILLED	SENIOR DEPUTY CLERK	63,637.35	14,954.78	4,868.26	13,695.00
CLERK'S OFFICE-1223	STT	FILLED	CHIEF DEPUTY CLERK	68,489.40	15,275.00	5,239.44	13,695.00
CLERK'S OFFICE-1273	STX	FILLED	PBX OPERATOR/RECEPTIONIST	29,068.20	6,831.03	2,223.72	13,695.00
CLERK'S OFFICE-1273	STX	FILLED	CHIEF DEPUTY CLERK	66,818.85	15,275.00	5,111.64	13,695.00
CLERK'S OFFICE-1273	STX	FILLED	CLERK OF THE COURT	106,249.50	24,968.63	7,741.00	13,695.00
SUBTOTAL				\$ 414,683	\$ 96,203	\$ 31,336	\$ 95,865
CRIMINAL DIVISION							
CRIMINAL DIVISION-1225	STT	FILLED	COURT CLERK II	32,924.85	7,737.34	2,518.75	13,695.00
CRIMINAL DIVISION-1225	STT	VACANT (TBF)	COURT CLERK II	38,606.40	9,072.50	2,953.39	13,695.00
CRIMINAL DIVISION-1225	STT	FILLED	COURT CLERK II/INTERPRETER	42,121.80	9,898.62	3,222.32	13,695.00
CRIMINAL DIVISION-1225	STT	FILLED	COURT CLERK SUPERVISOR	55,070.40	12,941.54	4,212.89	13,695.00
CRIMINAL DIVISION-1225	STT	VACANT (TBF)	COURT CLERK II	58,065.00	13,645.28	4,441.97	13,695.00
CRIMINAL DIVISION-1275	STX	VACANT (TBF)	COURT CLERK II	18,097.80	4,252.98	1,384.48	13,695.00

DIVISION	DISTRICT	VACANCY STATUS	POSITION TITLE	SALARY	GERS	FICA	HEALTH INSURANCE
CRIMINAL DIVISION-1275	STX	FILLED	COURT CLERK II	34,591.20	8,128.93	2,646.23	13,695.00
CRIMINAL DIVISION-1275	STX	FILLED	COURT CLERK I/INTERPRETER	40,951.05	9,623.50	3,132.76	13,695.00
CRIMINAL DIVISION-1275	STX	FILLED	COURT CLERK II/INTERPRETER	42,121.80	9,898.62	3,222.32	13,695.00
CRIMINAL DIVISION-1275	STX	FILLED	COURT CLERK SUPERVISOR	57,723.75	13,585.08	4,415.87	13,695.00
SUBTOTAL				\$ 420,274	\$ 98,764	\$ 32,151	\$ 136,950
FAMILY DIVISION							
FAMILY DIVISION-1226	STT	FILLED	COURT CLERK II	32,924.85	7,737.34	2,518.75	13,695.00
FAMILY DIVISION-1226	STT	FILLED	COURT CLERK II	32,924.85	7,737.34	2,518.75	13,695.00
FAMILY DIVISION-1226	STT	FILLED	COURT CLERK II	32,924.85	7,737.34	2,518.75	13,695.00
FAMILY DIVISION-1226	STT	FILLED	COURT CLERK II	34,591.20	8,128.93	2,646.23	13,695.00
FAMILY DIVISION-1226	STT	VACANT (T8F)	COURT CLERK II/INTERPRETER	43,174.95	10,146.11	3,302.88	13,695.00
FAMILY DIVISION-1226	STT	FILLED	COURT CLERK II	44,280.60	10,405.94	3,387.47	13,695.00
FAMILY DIVISION-1226	STT	FILLED	COURT CLERK II	56,648.55	13,312.41	4,333.61	13,695.00
FAMILY DIVISION-1226	STT	FILLED	COURT CLERK SUPERVISOR	65,461.20	15,275.00	5,007.78	13,695.00
FAMILY DIVISION-1276	STX	FILLED	COURT CLERK I	32,029.20	7,526.86	2,450.23	13,695.00
FAMILY DIVISION-1276	STX	FILLED	COURT CLERK II	34,591.20	8,128.93	2,646.23	13,695.00
FAMILY DIVISION-1276	STX	FILLED	COURT CLERK II	34,591.20	8,128.93	2,646.23	13,695.00
FAMILY DIVISION-1276	STX	FILLED	COURT CLERK II	38,183.25	8,973.06	2,921.02	13,695.00
FAMILY DIVISION-1276	STX	FILLED	PROBATE OFFICER II	45,252.90	10,634.43	3,461.85	13,695.00
FAMILY DIVISION-1276	STX	FILLED	PROBATE OFFICER II	45,333.75	10,653.43	3,468.03	13,695.00
FAMILY DIVISION-1276	STX	FILLED	COURT CLERK II	53,951.10	12,678.51	4,127.26	13,695.00
FAMILY DIVISION-1276	STX	FILLED	COURT CLERK SUPERVISOR	59,304.00	13,936.44	4,536.76	13,695.00
SUBTOTAL				\$ 686,168	\$ 161,141	\$ 52,492	\$ 219,120
JUDGES							
JUDGES-1246	STT	FILLED	LAW CLERK I (FRANCOIS)	58,509.00	-	4,475.94	13,695.00
JUDGES-1246	STT	FILLED	LAW CLERK I (GUMBS CARTY)	58,509.00	-	4,475.94	13,695.00
JUDGES-1246	STT	FILLED	LAW CLERK I (GUMBS CARTY)	58,509.00	-	4,475.94	13,695.00
JUDGES-1246	STT	FILLED	LAW CLERK I (TEJO)	58,509.00	-	4,475.94	13,695.00
JUDGES-1246	STT	FILLED	LAW CLERK I (TEJO)	58,509.00	-	4,475.94	13,695.00
JUDGES-1246	STT	FILLED	LAW CLERK I (FRANCOIS)	58,509.00	-	4,475.94	13,695.00
JUDGES-1246	STT	FILLED	JUDICIAL SECRETARY (GUMBS-CARTY)	56,614.95	13,304.51	4,331.04	13,695.00
JUDGES-1246	STT	FILLED	JUDICIAL SECRETARY (TEJO)	59,481.45	13,978.14	4,550.33	13,695.00
JUDGES-1246	STT	FILLED	JUDICIAL SECRETARY (MACKAY)	60,931.50	14,318.90	4,661.26	13,695.00
JUDGES-1246	STT	FILLED	LAW CLERK II (WATLINGTON)	58,509.00	-	4,475.94	13,695.00
JUDGES-1246	STT	FILLED	LAW CLERK II (MACKAY)	58,509.00	-	4,475.94	13,695.00
JUDGES-1246	STT	FILLED	LAW CLERK II (WATLINGTON)	58,509.00	-	4,475.94	13,695.00
JUDGES-1246	STT	FILLED	LAW CLERK II (MACKAY)	58,509.00	-	4,475.94	13,695.00
JUDGES-1246	STT	FILLED	JUDICIAL SECRETARY (WATLINGTON)	66,252.90	15,275.00	5,068.35	13,695.00
JUDGES-1246	STT	FILLED	JUDICIAL SECRETARY (FRANCOIS)	69,470.10	15,275.00	5,314.46	13,695.00
JUDGES-1246	STT	FILLED	JUDGE	191,360.00	44,969.60	11,438.00	13,695.00
JUDGES-1246	STT	FILLED	JUDGE	191,360.00	44,969.60	11,438.00	13,695.00
JUDGES-1246	STT	FILLED	JUDGE (ADMINISTRATIVE 7-9-2020)	196,360.00	46,144.60	11,438.00	13,695.00
JUDGES-1246	STT	FILLED	JUDGE	191,360.00	44,969.60	11,438.00	13,695.00

DIVISION	DISTRICT	VACANCY STATUS	POSITION TITLE	SALARY	TERS	FICA	HEALTH INSURANCE
JUDGES-1246	STT	FILLED	JUDGE	191,360.00	44,969.60	11,438.00	13,695.00
JUDGES-1296	STX	FILLED	JUDICIAL SECRETARY (MEADE)	36,299.55	8,530.39	2,776.92	13,695.00
JUDGES-1296	STX	FILLED	JUDICIAL SECRETARY	51,290.40	12,053.24	3,923.72	13,695.00
JUDGES-1296	STX	FILLED	JUDICIAL SECRETARY	55,234.20	12,980.04	4,225.42	13,695.00
JUDGES-1296	STX	FILLED	LAW CLERK II (GALLIVAN)	58,509.00	-	4,475.94	13,695.00
JUDGES-1296	STX	FILLED	LAW CLERK I (BRADY)	58,509.00	-	4,475.94	13,695.00
JUDGES-1296	STX	FILLED	LAW CLERK I (WILLOCKS)	58,509.00	-	4,475.94	13,695.00
JUDGES-1296	STX	FILLED	JUDICIAL SECRETARY	59,481.45	13,978.14	4,550.33	13,695.00
JUDGES-1296	STX	VACANT (TBF)	JUDICIAL SECRETARY	59,481.45	13,978.14	4,550.33	13,695.00
JUDGES-1296	STX	FILLED	LAW CLERK II (GALLIVAN)	58,509.00	-	4,475.94	13,695.00
JUDGES-1296	STX	VACANT (TBF)	LAW CLERK I (ANDREWS)	58,509.00	-	4,475.94	13,695.00
JUDGES-1296	STX	FILLED	LAW CLERK II (MEADE)	58,509.00	-	4,475.94	13,695.00
JUDGES-1296	STX	VACANT (TBF)	LAW CLERK II (MEADE)	58,509.00	-	4,475.94	13,695.00
JUDGES-1296	STX	VACANT (TBF)	LAW CLERK II (ANDREWS)	58,509.00	-	4,475.94	13,695.00
JUDGES-1296	STX	FILLED	LAW CLERK II (BRADY)	58,509.00	-	4,475.94	13,695.00
JUDGES-1296	STX	FILLED	LAW CLERK II (WILLOCKS)	58,509.00	-	4,475.94	13,695.00
JUDGES-1296	STX	FILLED	JUDGE	191,360.00	44,969.60	11,438.00	13,695.00
JUDGES-1296	STX	FILLED	JUDGE	191,360.00	44,969.60	11,438.00	13,695.00
JUDGES-1296	STX	FILLED	JUDGE	191,360.00	44,969.60	11,438.00	13,695.00
JUDGES-1296	STX	FILLED	JUDGE	191,360.00	44,969.60	11,438.00	13,695.00
JUDGES-1296	STX	FILLED	PRESIDING JUDGE	201,360.00	47,319.60	11,583.00	13,695.00
SUBTOTAL				\$ 3,673,318	\$ 586,893	\$ 247,996	\$ 547,800
JURY TRIAL DIVISION							
JURY TRIAL DIVISION-1227	STT	FILLED	COURT CLERK II	33,748.05	7,930.79	2,581.73	13,695.00
JURY TRIAL DIVISION-1227	STT	FILLED	COURT CLERK II	34,591.20	8,128.93	2,646.23	13,695.00
JURY TRIAL DIVISION-1227	STT	VACANT (TBF)	COURT CLERK II	44,280.60	10,405.94	3,387.47	13,695.00
JURY TRIAL DIVISION-1227	STT	FILLED	COURT CLERK II	47,684.70	11,205.90	3,647.88	13,695.00
JURY TRIAL DIVISION-1227	STT	FILLED	COURT CLERK SUPERVISOR	47,487.30	11,159.52	3,632.78	13,695.00
JURY TRIAL DIVISION-1227	STT	VACANT (TBF)	COURT CLERK II	70,287.00	15,275.00	5,376.96	13,695.00
JURY TRIAL DIVISION-1277	STX	VACANT (TBF)	COURT CLERK II	34,591.20	8,128.93	2,646.23	13,695.00
JURY TRIAL DIVISION-1277	STX	FILLED	COURT CLERK II/INTERPRETER	43,174.95	10,146.11	3,302.88	13,695.00
JURY TRIAL DIVISION-1277	STX	FILLED	COURT CLERK II	43,200.15	10,152.04	3,304.81	13,695.00
JURY TRIAL DIVISION-1277	STX	FILLED	COURT CLERK II	44,280.60	10,405.94	3,226.16	13,695.00
JURY TRIAL DIVISION-1277	STX	VACANT (TBF)	COURT CLERK SUPERVISOR	51,138.15	12,017.47	3,912.07	13,695.00
SUBTOTAL				\$ 494,464	\$ 114,957	\$ 37,665	\$ 150,645
MAGISTRATES							
MAGISTRATES-1248	STT	FILLED	JUDICIAL SECRETARY	44,340.45	10,420.01	3,392.04	13,695.00
MAGISTRATES-1248	STT	VACANT (TBF)	LAW CLERK I (PROBATE)	58,509.00	-	4,475.94	13,695.00
MAGISTRATES-1248	STT	FILLED	JUDICIAL SECRETARY	60,083.10	14,119.53	4,596.36	13,695.00
MAGISTRATES-1248	STT	FILLED	LAW CLERK II (Hermon Percell)	58,509.00	-	4,475.94	13,695.00
MAGISTRATES-1248	STT	FILLED	LAW CLERK II (CARR)	58,509.00	-	4,475.94	13,695.00
MAGISTRATES-1248	STT	FILLED	MAGISTRATE JUDGE	162,656.00	38,224.16	11,050.00	13,695.00
MAGISTRATES-1248	STT	FILLED	MAGISTRATE JUDGE	162,656.00	38,224.16	11,050.00	13,695.00

DIVISION	DISTRICT	VACANCY STATUS	POSITION TITLE	SALARY	TERS	FICA	HEALTH INSURANCE
MAGISTRATES-1298	STX	VACANT (TBF)	JUDICIAL SECRETARY	38,137.05	8,962.21	2,917.48	13,695.00
MAGISTRATES-1298	STX	FILLED	JUDICIAL SECRETARY	46,466.70	10,919.67	3,554.70	13,695.00
MAGISTRATES-1298	STX	FILLED	LAW CLERK II (MORRIS)	58,509.00	-	4,475.94	13,695.00
MAGISTRATES-1298	STX	VACANT (TBF)	LAW CLERK II (CAMACHO)	58,509.00	-	4,475.94	13,695.00
MAGISTRATES-1298	STX	FILLED	MAGISTRATE JUDGE	162,656.00	38,224.16	11,050.00	13,695.00
MAGISTRATES-1298	STX	FILLED	MAGISTRATE JUDGE	162,656.00	38,224.16	11,050.00	13,695.00
SUBTOTAL				\$ 1,132,196	\$ 197,318	\$ 81,040	\$ 178,035
PROBATE DIVISION							
PROBATE DIVISION-1229	STT	FILLED	PROBATE OFFICER II	43,072.05	10,121.93	3,295.01	13,695.00
PROBATE DIVISION-1229	STT	FILLED	PROBATE OFFICER II/INTERPRETER	45,225.60	10,628.02	3,459.76	13,695.00
PROBATE DIVISION-1229	STT	FILLED	COURT CLERK SUPERVISOR	67,097.10	15,275.00	5,132.93	13,695.00
SUBTOTAL				\$ 155,395	\$ 36,025	\$ 11,888	\$ 41,085
TRAFFIC DIVISION							
TRAFFIC DIVISION-1230	STT	FILLED	COURT CLERK II	32,924.85	7,737.34	2,518.75	13,695.00
TRAFFIC DIVISION-1230	STT	VACANT (TBF)	COURT CLERK II	32,924.85	7,737.34	2,518.75	13,695.00
TRAFFIC DIVISION-1230	STT	FILLED	COURT CLERK II	36,342.60	8,540.51	2,780.21	13,695.00
TRAFFIC DIVISION-1230	STT	VACANT (TBF)	COURT CLERK II/INTERPRETER	39,113.55	9,191.68	2,992.19	13,695.00
TRAFFIC DIVISION-1230	STT	FILLED	COURT CLERK SUPERVISOR	51,138.15	12,017.47	3,912.07	13,695.00
TRAFFIC DIVISION-1280	STX	FILLED	COURT CLERK II	34,591.20	8,128.93	2,646.23	13,695.00
TRAFFIC DIVISION-1280	STX	FILLED	COURT CLERK II	44,280.60	10,405.94	3,387.47	13,695.00
TRAFFIC DIVISION-1280	STX	FILLED	COURT CLERK SUPERVISOR	48,673.80	11,438.34	3,723.55	13,695.00
SUBTOTAL				\$ 319,990	\$ 75,198	\$ 24,479	\$ 109,560
TOTAL				8,198,663.15	1,542,665.98	588,063.81	1,752,960.00

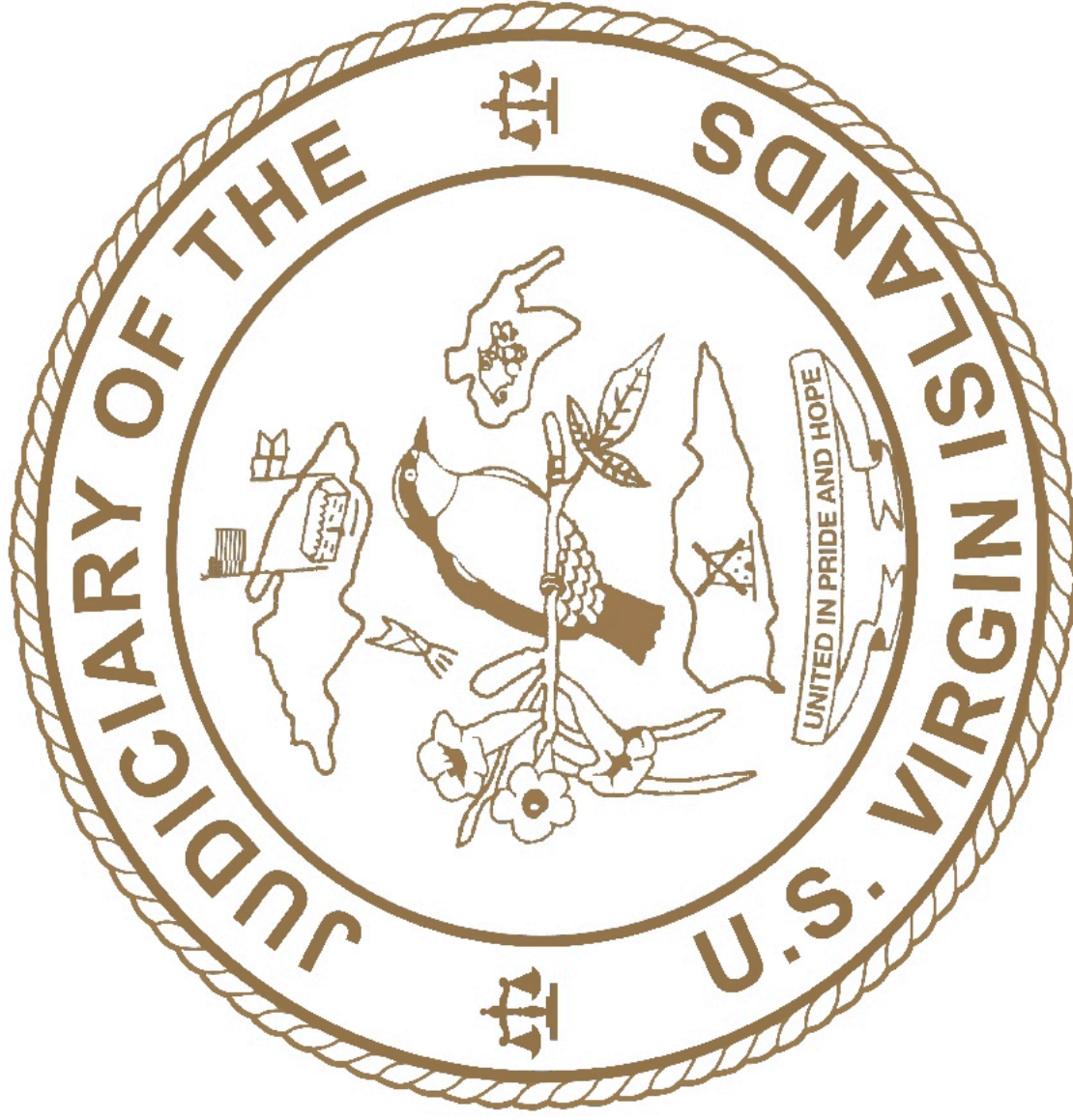
DIVISION	DISTRICT	VACANCY STATUS	POSITION TITLE	SALARY	GRS	FICA	HEALTH INSURANCE
ADMINISTRATION							
ADMINISTRATION-1402	STT	FILLED	MAIL CLERK/MESSENGER	30,540	7,177	2,336	13,696
ADMINISTRATION-1402	STT	FILLED	SWITCHBOARD OPERATOR/RECEPTIONIST	33,273	7,819	2,545	13,696
ADMINISTRATION-1402	STT	FILLED	COURT IMPROVEMENT PROGRAM COORDINATOR	58,960	13,896	4,510	13,696
ADMINISTRATION-1402	STT	VACANT (TBF)	ADMINISTRATIVE SECRETARY	62,465	14,677	4,778	13,696
ADMINISTRATION-1402	STT	FILLED	EXECUTIVE ADMINISTRATIVE ASSISTANT	71,422	15,275	5,484	13,696
ADMINISTRATION-1402	STT	FILLED	COURT SERVICES ADMINISTRATOR	116,843	27,458	8,513	13,696
ADMINISTRATION-1402	STT	FILLED	ADMINISTRATOR OF COURTS	140,503	33,018	10,237	13,696
ADMINISTRATION-1452	STX	VACANT (TBF)	MAIL CLERK/MESSENGER	30,540	7,177	2,336	13,696
ADMINISTRATION-1452	STX	FILLED	ADMINISTRATIVE SECRETARY	44,201	10,387	3,381	13,696
ADMINISTRATION-1452	STX	VACANT (TBF)	ADMINISTRATIVE OFFICER II	54,210	12,739	4,147	13,696
ADMINISTRATION-1452	STX	FILLED	ASSISTANT ADMINISTRATOR OF COURTS	123,470	29,015	8,996	13,696
BUSINESS INTELLIGENCE	STT	VACANT (TBF)	BUSINESS INTELLIGENCE/COMPLIANCE OFFICER	78,483	15,275	6,004	13,696
AUDITING	STT	VACANT (TBF)	CHIEF EXECUTIVE/INTERNAL AUDITOR	98,750	15,275	7,631	13,696
SUBTOTAL				\$ 944,630	\$ 209,149	\$ 70,879	\$ 178,035
BUDGET & ACCOUNTING SERVICES							
BUDGET & ACCOUNTING SERVICES-1401	STT	VACANT (TBF)	ACCOUNTING CLERK II	40,266	9,232	3,080	13,696
BUDGET & ACCOUNTING SERVICES-1401	STT	FILLED	ACCOUNTING CLERK II	41,248	9,693	3,155	13,696
BUDGET & ACCOUNTING SERVICES-1401	STT	FILLED	ACCOUNTING CLERK II	41,248	9,693	3,155	13,696
BUDGET & ACCOUNTING SERVICES-1401	STT	FILLED	ACCOUNTANT	50,548	11,879	3,867	13,696
BUDGET & ACCOUNTING SERVICES-1401	STT	FILLED	SENIOR ACCOUNTANT	71,630	15,275	5,480	13,696
BUDGET & ACCOUNTING SERVICES-1401	STT	FILLED	ACCOUNTING SERVICES SUPERVISOR **	83,697	15,275	6,403	13,696
BUDGET & ACCOUNTING SERVICES-1401	STT	FILLED	CHIEF FINANCIAL OFFICER	129,348	30,397	9,424	13,696
BUDGET & ACCOUNTING SERVICES-1451	STX	FILLED	ACCOUNTING CLERK I	33,630	7,903	2,573	13,696
BUDGET & ACCOUNTING SERVICES-1451	STX	FILLED	SENIOR ACCOUNTING CLERK	44,548	10,469	3,408	13,696
BUDGET & ACCOUNTING SERVICES-1451	STX	FILLED	ACCOUNTING CLERK II	46,529	10,699	3,483	13,696
BUDGET & ACCOUNTING SERVICES-1451	STX	FILLED	COMPTROLLER	111,213	26,135	8,103	13,696
SUBTOTAL				\$ 692,906	\$ 156,650	\$ 52,131	\$ 150,645
COURT REPORTING							
COURT REPORTING -1412	STT	FILLED	OFFICIAL COURT REPORTER I	62,363	14,663	4,770	13,696
COURT REPORTING -1412	STT	FILLED	OFFICIAL COURT REPORTER II	70,369	15,275	5,383	13,696
COURT REPORTING -1412	STT	VACANT (TBF)	OFFICIAL COURT REPORTER II	79,615	15,275	6,091	13,696
COURT REPORTING -1412	STT	FILLED	OFFICIAL COURT REPORTER II	81,606	15,275	6,243	13,696
COURT REPORTING -1412	STT	VACANT (TBF)	COURT REPORTER SUPERVISOR	94,525	15,275	7,231	13,696
COURT REPORTING -1462	STX	FILLED	OFFICIAL COURT REPORTER I	62,344	14,661	4,769	13,696
COURT REPORTING -1462	STX	FILLED	OFFICIAL COURT REPORTER I	62,344	14,661	4,769	13,696
COURT REPORTING -1462	STX	FILLED	OFFICIAL COURT REPORTER II	66,977	15,275	5,124	13,696
COURT REPORTING -1462	STX	FILLED	OFFICIAL COURT REPORTER II	72,128	15,275	5,518	13,696
COURT REPORTING -1462	STX	FILLED	OFFICIAL COURT REPORTER II	73,932	15,275	5,666	13,696
COURT REPORTING -1462	STX	FILLED	COURT REPORTER SUPERVISOR	85,606	15,275	6,561	13,696
SUBTOTAL				\$ 811,829	\$ 166,155	\$ 62,105	\$ 150,645
FACILITIES MANAGEMENT & MAINTENANCE							
FACILITIES MANAGEMENT & MAINTENANCE-1406	STT	FILLED	CUSTODIAN	28,392	6,672	2,172	13,696
FACILITIES MANAGEMENT & MAINTENANCE-1406	STT	FILLED	CUSTODIAN	29,813	7,006	2,281	13,696
FACILITIES MANAGEMENT & MAINTENANCE-1406	STT	FILLED	CUSTODIAN	29,813	7,006	2,281	13,696
FACILITIES MANAGEMENT & MAINTENANCE-1406	STT	FILLED	CUSTODIAN (PART-TIME)	33,730	7,927	2,580	13,696
FACILITIES MANAGEMENT & MAINTENANCE-1406	STT	FILLED	CUSTODIAN (PART-TIME)	36,324	8,536	2,779	13,696
FACILITIES MANAGEMENT & MAINTENANCE-1406	STT	FILLED	BLDG GRNDS MAINT/REP. WORKER	38,027	8,936	2,909	13,696
FACILITIES MANAGEMENT & MAINTENANCE-1406	STT	FILLED	BLDG GRNDS MAINT/REP. WORKER	38,027	8,936	2,909	13,696
FACILITIES MANAGEMENT & MAINTENANCE-1406	STT	FILLED	BLDG GRNDS MAINT/REP. WORKER	38,027	8,936	2,909	13,696
FACILITIES MANAGEMENT & MAINTENANCE-1406	STT	FILLED	BLDG GRNDS MAINT/REP. WORKER	38,027	8,936	2,909	13,696
FACILITIES MANAGEMENT & MAINTENANCE-1406	STT	FILLED	CUSTODIAN	39,510	9,285	3,023	13,696
FACILITIES MANAGEMENT & MAINTENANCE-1406	STT	FILLED	BUILDING & GROUNDS SUPERVISOR	56,447	13,265	4,318	13,696
FACILITIES MANAGEMENT & MAINTENANCE-1456	STX	FILLED	BUILDING & GROUNDS MAINT WORKER TRAINEE	28,392	6,672	2,172	13,696

DIVISION	DISTRICT	VACANCY STATUS	POSITION TITLE	SALARY	GPS	FICA	HEALTH INSURANCE
FACILITIES MANAGEMENT & MAINTENANCE-1456	STX	FILLED	CUSTODIAN	28,813	7,006	2,281	13,696
FACILITIES MANAGEMENT & MAINTENANCE-1456	STX	FILLED	CUSTODIAN	28,813	7,006	2,281	13,696
FACILITIES MANAGEMENT & MAINTENANCE-1456	STX	FILLED	CUSTODIAN	28,813	7,006	2,281	13,696
FACILITIES MANAGEMENT & MAINTENANCE-1456	STX	FILLED	CUSTODIAN	28,392	6,872	2,172	13,696
FACILITIES MANAGEMENT & MAINTENANCE-1456	STX	VACANT (TBF)	BLDGGRNDS MAINT/REP. WORKER	38,027	8,936	2,909	13,696
FACILITIES MANAGEMENT & MAINTENANCE-1456	STX	FILLED	BLDGGRNDS MAINT/REP. WORKER	38,027	8,936	2,909	13,696
FACILITIES MANAGEMENT & MAINTENANCE-1456	STX	FILLED	CUSTODIAN	38,636	9,079	2,966	13,696
FACILITIES MANAGEMENT & MAINTENANCE-1456	STX	FILLED	BLDGGRNDS MAINT/REP. WORKER	43,024	10,111	3,291	13,696
FACILITIES MANAGEMENT & MAINTENANCE-1456	STX	FILLED	BUILDING & GROUNDS SUPERVISOR	56,447	13,265	4,318	13,696
FACILITIES MANAGEMENT & MAINTENANCE-1456	STX	VACANT (TBF)	FACILITIES MANAGER	95,939	15,275	7,339	13,696
SUBTOTAL				\$ 862,456	\$ 195,407	\$ 65,978	\$ 301,290
GENERAL COUNSEL SERVICES							
GENERAL COUNSEL SERVICES-1447	STT	FILLED	LEGAL SECRETARY	58,030	13,637	4,439	13,696
GENERAL COUNSEL SERVICES-1447	STT	FILLED	ASST. GENERAL COUNSEL	106,439	25,013	7,756	13,696
GENERAL COUNSEL SERVICES-1447	STT	FILLED	GENERAL COUNSEL	123,470	29,015	8,996	13,696
SUBTOTAL				\$ 287,938	\$ 67,666	\$ 21,190	\$ 41,085
HUMAN RESOURCES							
HUMAN RESOURCES-1403	STT	FILLED	HUMAN CAPITAL GENERALIST	52,963	12,444	4,051	13,696
HUMAN RESOURCES-1403	STT	FILLED	EMPLOYEE RELATIONS COORDINATOR	73,932	15,275	5,666	13,696
HUMAN RESOURCES-1403	STT	FILLED	CHIEF HUMAN CAPITAL OFFICER	100,754	15,275	7,708	13,696
HUMAN RESOURCES-1453	STX	FILLED	HUMAN CAPITAL GENERALIST	45,662	10,731	3,493	13,696
HUMAN RESOURCES-1453	STX	FILLED	EMPLOYEE RELATIONS COORDINATOR	81,030	15,275	6,199	13,696
SUBTOTAL				\$ 354,330	\$ 69,000	\$ 27,106	\$ 68,475
INFORMATION TECHNOLOGY							
INFORMATION TECHNOLOGY-1404	STT	FILLED	NETWORK/SYSTEMS SUPP TECH	61,408	14,431	4,688	13,696
INFORMATION TECHNOLOGY-1404	STT	FILLED	APPLICATIONS/SYSTEMS SUPP TECH	61,408	14,431	4,688	13,696
INFORMATION TECHNOLOGY-1404	STT	FILLED	NETWORK/SYSTEMS SUPP TECH	61,408	14,431	4,688	13,696
INFORMATION TECHNOLOGY-1404	STT	FILLED	COMPUTER SUPPORT TECHNICIAN	61,408	14,431	4,688	13,696
INFORMATION TECHNOLOGY-1404	STT	FILLED	NETWORK/SYSTEMS ADMINISTRATOR	70,489	15,275	5,392	13,696
INFORMATION TECHNOLOGY-1404	STT	FILLED	DATABASE ADMINISTRATOR	74,057	15,275	5,666	13,696
INFORMATION TECHNOLOGY-1454	STX	FILLED	NETWORK/SYSTEMS SUPP TECH	44,548	10,469	3,408	13,696
INFORMATION TECHNOLOGY-1454	STX	FILLED	NETWORK/SYSTEMS SUPP TECH	44,548	10,469	3,408	13,696
INFORMATION TECHNOLOGY-1454	STX	FILLED	COMPUTER SUPPORT TECHNICIAN	61,408	14,431	4,688	13,696
INFORMATION TECHNOLOGY-1454	STX	FILLED	DATABASE ANALYST	61,408	14,431	4,688	13,696
INFORMATION TECHNOLOGY-1454	STX	FILLED	CHIEF INFORMATION SECURITY OFFICER	84,518	15,275	6,466	13,696
INFORMATION TECHNOLOGY-1454	STT	FILLED	CHIEF INFORMATION TECH. OFFICER	95,624	15,275	7,315	13,696
SUBTOTAL				\$ 782,332	\$ 168,623	\$ 59,841	\$ 164,340
JURY MANAGEMENT							
JURY MANAGEMENT-1405	STT	FILLED	JURY CLERK	43,050	10,117	3,293	13,696
JURY MANAGEMENT-1405	STT	VACANT (TBF)	JURY CLERK	46,804	10,999	3,580	13,696
JURY MANAGEMENT-1405	STT	FILLED	JURY CLERK	50,640	11,901	3,874	13,696
JURY MANAGEMENT-1405	STT	FILLED	JURY MANAGER	52,364	12,303	4,005	13,696
JURY MANAGEMENT-1455	STX	FILLED	JURY CLERK	32,810	7,710	2,510	13,696
JURY MANAGEMENT-1455	STX	FILLED	JURY MANAGER	53,663	12,811	4,105	13,696
SUBTOTAL				\$ 279,322	\$ 65,641	\$ 21,368	\$ 82,170
OFFICE OF THE VI MARSHAL							
OFFICE OF THE VI MARSHAL-1440	STT	FILLED	ADMINISTRATIVE OFFICER II	32,925	7,737	2,519	13,696
OFFICE OF THE VI MARSHAL-1440	STT	FILLED	DEPUTY MARSHAL	40,955	9,624	3,133	13,696
OFFICE OF THE VI MARSHAL-1440	STT	FILLED	DEPUTY MARSHAL	40,955	9,624	3,133	13,696
OFFICE OF THE VI MARSHAL-1440	STT	FILLED	DEPUTY MARSHAL	43,003	10,106	3,290	13,696
OFFICE OF THE VI MARSHAL-1440	STT	FILLED	DEPUTY MARSHAL	43,003	10,106	3,290	13,696
OFFICE OF THE VI MARSHAL-1440	STT	FILLED	DEPUTY MARSHAL II	50,045	11,761	3,828	13,696

DIVISION	DISTRICT	VACANCY STATUS	POSITION TITLE	SALARY	TERS	FICA	HEALTH INSURANCE
OFFICE OF THE VI MAR SHAL-1440	STT	VACANT (TBF)	DEPUTY MARSHAL II	50,045	11,761	3,828	13,665
OFFICE OF THE VI MAR SHAL-1440	STT	FILLED	DEPUTY MARSHAL II	50,045	11,761	3,828	13,665
OFFICE OF THE VI MAR SHAL-1440	STT	FILLED	DEPUTY MARSHAL II	51,296	12,054	3,924	13,665
OFFICE OF THE VI MAR SHAL-1440	STT	FILLED	DEPUTY MARSHAL II	52,578	12,358	4,022	13,665
OFFICE OF THE VI MAR SHAL-1440	STT	FILLED	DEPUTY MARSHAL II	55,049	12,937	4,211	13,665
OFFICE OF THE VI MAR SHAL-1440	STT	FILLED	DEPUTY MARSHAL II	55,239	12,981	4,226	13,665
OFFICE OF THE VI MAR SHAL-1440	STT	FILLED	DEPUTY MARSHAL II	56,317	13,234	4,308	13,665
OFFICE OF THE VI MAR SHAL-1440	STT	FILLED	DEPUTY MARSHAL II	58,036	13,638	4,440	13,665
OFFICE OF THE VI MAR SHAL-1440	STT	FILLED	DEPUTY MARSHAL II	58,177	13,672	4,451	13,665
OFFICE OF THE VI MAR SHAL-1440	STT	FILLED	DEPUTY MARSHAL II	60,064	14,113	4,594	13,665
OFFICE OF THE VI MAR SHAL-1440	STT	FILLED	DEPUTY MARSHAL II	60,703	14,265	4,644	13,665
OFFICE OF THE VI MAR SHAL-1440	STT	FILLED	DEPUTY MARSHAL III	60,829	14,296	4,653	13,665
OFFICE OF THE VI MAR SHAL-1440	STT	FILLED	DEPUTY MARSHAL III	65,770	15,275	5,031	13,665
OFFICE OF THE VI MAR SHAL-1440	STT	FILLED	DEPUTY MARSHAL III	67,144	15,275	5,137	13,665
OFFICE OF THE VI MAR SHAL-1440	STT	FILLED	ADMINISTRATIVE OFFICER II	67,662	15,275	5,176	13,665
OFFICE OF THE VI MAR SHAL-1440	STT	FILLED	DEPUTY MARSHAL III	68,963	15,275	5,351	13,665
OFFICE OF THE VI MAR SHAL-1440	STT	FILLED	DEPUTY MARSHAL III	70,544	15,275	5,397	13,665
OFFICE OF THE VI MAR SHAL-1440	STT	FILLED	DEPUTY MARSHAL III	74,668	15,275	5,711	13,665
OFFICE OF THE VI MAR SHAL-1440	STT	FILLED	DEPUTY MARSHAL III	75,968	15,275	5,812	13,665
OFFICE OF THE VI MAR SHAL-1440	STT	FILLED	DEPUTY MARSHAL III	76,472	15,275	5,850	13,665
OFFICE OF THE VI MAR SHAL-1440	STT	FILLED	DEPUTY MARSHAL III	80,888	15,275	6,188	13,665
OFFICE OF THE VI MAR SHAL-1440	STT	FILLED	DEPUTY MARSHAL III	83,854	15,275	6,415	13,665
OFFICE OF THE VI MAR SHAL-1440	STT	FILLED	ASSISTANT MARSHAL	85,594	15,275	6,548	13,665
OFFICE OF THE VI MAR SHAL-1440	STT	FILLED	DEPUTY MARSHAL III	85,641	15,275	6,552	13,665
OFFICE OF THE VI MAR SHAL-1440	STT	FILLED	DEPUTY MARSHAL III	87,742	15,275	6,712	13,665
OFFICE OF THE VI MAR SHAL-1440	STT	FILLED	DEPUTY MARSHAL IV	87,942	15,275	6,728	13,665
OFFICE OF THE VI MAR SHAL-1440	STT	FILLED	DEPUTY MARSHAL IV	92,395	15,275	7,068	13,665
OFFICE OF THE VI MAR SHAL-1490	STX	FILLED	ADMINISTRATIVE OFFICER II	32,925	7,737	2,519	13,665
OFFICE OF THE VI MAR SHAL-1490	STX	VACANT (TBF)	DEPUTY MARSHAL I	43,003	10,106	3,290	13,665
OFFICE OF THE VI MAR SHAL-1490	STX	VACANT (TBF)	DEPUTY MARSHAL I	43,003	10,106	3,290	13,665
OFFICE OF THE VI MAR SHAL-1490	STX	VACANT (TBF)	DEPUTY MARSHAL I	43,003	10,106	3,290	13,665
OFFICE OF THE VI MAR SHAL-1490	STX	VACANT (TBF)	DEPUTY MARSHAL I	43,003	10,106	3,290	13,665
OFFICE OF THE VI MAR SHAL-1490	STX	FILLED	DEPUTY MARSHAL I	43,003	10,106	3,290	13,665
OFFICE OF THE VI MAR SHAL-1490	STX	FILLED	DEPUTY MARSHAL I	43,003	10,106	3,290	13,665
OFFICE OF THE VI MAR SHAL-1490	STX	FILLED	DEPUTY MARSHAL II	50,045	11,761	3,828	13,665
OFFICE OF THE VI MAR SHAL-1490	STX	FILLED	DEPUTY MARSHAL II	50,045	11,761	3,828	13,665
OFFICE OF THE VI MAR SHAL-1490	STX	FILLED	DEPUTY MARSHAL II	50,045	11,761	3,828	13,665
OFFICE OF THE VI MAR SHAL-1490	STX	FILLED	DEPUTY MARSHAL II	50,045	11,761	3,828	13,665
OFFICE OF THE VI MAR SHAL-1490	STX	FILLED	DEPUTY MARSHAL II	50,045	11,761	3,828	13,665
OFFICE OF THE VI MAR SHAL-1490	STX	FILLED	DEPUTY MARSHAL II	50,045	11,761	3,828	13,665
OFFICE OF THE VI MAR SHAL-1490	STX	FILLED	DEPUTY MARSHAL II	51,296	12,054	3,924	13,665
OFFICE OF THE VI MAR SHAL-1490	STX	VACANT (TBF)	DEPUTY MARSHAL II	51,351	12,058	3,928	13,665
OFFICE OF THE VI MAR SHAL-1490	STX	FILLED	ADMINISTRATIVE OFFICER II	60,053	14,112	4,594	13,665
OFFICE OF THE VI MAR SHAL-1490	STX	FILLED	DEPUTY MARSHAL II	60,054	14,113	4,594	13,665
OFFICE OF THE VI MAR SHAL-1490	STX	FILLED	DEPUTY MARSHAL II	60,054	14,113	4,594	13,665
OFFICE OF THE VI MAR SHAL-1490	STX	FILLED	DEPUTY MARSHAL III	66,506	15,275	5,011	13,665
OFFICE OF THE VI MAR SHAL-1490	STX	FILLED	DEPUTY MARSHAL III	67,144	15,275	5,137	13,665
OFFICE OF THE VI MAR SHAL-1490	STX	FILLED	DEPUTY MARSHAL IV	70,417	15,275	5,387	13,665
OFFICE OF THE VI MAR SHAL-1490	STX	FILLED	DEPUTY MARSHAL IV	70,417	15,275	5,387	13,665
OFFICE OF THE VI MAR SHAL-1490	STX	VACANT (TBF)	DEPUTY MARSHAL III	70,693	15,275	5,408	13,665
OFFICE OF THE VI MAR SHAL-1490	STX	FILLED	DEPUTY MARSHAL III	73,372	15,275	5,613	13,665
OFFICE OF THE VI MAR SHAL-1490	STX	FILLED	DEPUTY MARSHAL III	74,668	15,275	5,711	13,665

DIVISION	DISTRICT	VACANCY STATUS	POSITION TITLE	SALARY	GRS	FICA	HEALTH INSURANCE
OFFICE OF THE VI MARSHAL-1490	STX	FILLED	ASSISTANT MARSHAL	85,594	15,275	6,548	13,896
OFFICE OF THE VI MARSHAL-1490	STX	FILLED	CHIEF MARSHAL	100,754	15,275	7,708	13,896
OFFICE OF THE VI MARSHAL-1490	STX	FILLED	SENIOR DEPUTY MARSHAL IV	104,287	15,275	7,978	13,896
SUBTOTAL				\$ 3,841,389	\$ 825,160	\$ 293,866	\$ 862,785
PRETRIAL							
PRETRIAL-1407	STT	FILLED	STEELPAN INSTRUCTOR	31,210	7,334	2,388	13,896
PRETRIAL-1407	STT	FILLED	STEELPAN INSTRUCTOR	32,790	7,706	2,508	13,896
PRETRIAL-1407	STT	VACANT (TBF)	PRETRIAL INTERVENTION OFFICER	42,264	9,932	3,233	13,896
PRETRIAL-1407	STT	FILLED	STEELPAN INSTRUCTOR	46,332	10,888	3,544	13,896
PRETRIAL-1407	STT	FILLED	STEELPAN INSTRUCTOR	47,351	11,127	3,622	13,896
PRETRIAL-1407	STT	FILLED	STEELPAN INSTRUCTOR	48,353	11,363	3,699	13,896
PRETRIAL-1407	STT	FILLED	STEELPAN INSTRUCTOR/ARRANGER	55,259	12,988	4,227	13,896
PRETRIAL-1407	STT	FILLED	STEELPAN INSTRUCTOR/ARRANGER	57,996	13,628	4,437	13,896
PRETRIAL-1407	STT	FILLED	PRETRIAL INTERVENTION DIRECTOR	57,789	13,580	4,421	13,896
PRETRIAL-1407	STT	FILLED	CHIEF INSTRUCTOR, RISING STARS	79,711	15,275	6,098	13,896
PRETRIAL-1457	STX	FILLED	STEELPAN INSTRUCTOR PT	23,408	5,501	1,791	13,896
PRETRIAL-1457	STX	FILLED	STEELPAN INSTRUCTOR	30,449	7,156	2,329	13,896
PRETRIAL-1457	STX	FILLED	STEELPAN INSTRUCTOR	31,210	7,334	2,388	13,896
PRETRIAL-1457	STX	FILLED	STEELPAN INSTRUCTOR/ARRANGER	38,115	8,957	2,916	13,896
PRETRIAL-1457	STX	FILLED	PRETRIAL INTERVENTION OFFICER	41,572	9,769	3,180	13,896
PRETRIAL-1457	STX	VACANT (TBF)	CHIEF INSTRUCTOR, RISING STARS	59,269	13,928	4,534	13,896
PRETRIAL-1457	STX	FILLED	PRETRIAL INTERVENTION DIRECTOR	77,421	15,275	5,923	13,896
SUBTOTAL				\$ 800,498	\$ 181,741	\$ 61,238	\$ 232,815
PROBATION							
PROBATION -1408	STT	VACANT (TBF)	ADMINISTRATIVE OFFICER II	32,925	7,553	2,389	13,896
PROBATION -1408	STT	FILLED	PROBATION OFFICER	36,300	8,530	2,777	13,896
PROBATION -1408	STT	FILLED	PROBATION OFFICER	48,819	11,472	3,735	13,896
PROBATION -1408	STT	FILLED	PROBATION OFFICER	55,234	12,980	4,225	13,896
PROBATION -1408	STT	FILLED	PROBATION OFFICER	60,932	14,319	4,661	13,896
PROBATION -1408	STT	FILLED	DEPUTY CHIEF PROBATION OFFICER	66,977	15,275	5,124	13,896
PROBATION -1458	STX	FILLED	ADMINISTRATIVE OFFICER II	42,147	9,905	3,224	13,896
PROBATION -1458	STX	FILLED	PROBATION OFFICER	44,228	10,394	3,383	13,896
PROBATION -1458	STX	FILLED	PROBATION OFFICER	46,467	10,920	3,555	13,896
PROBATION -1458	STX	FILLED	PROBATION OFFICER	65,578	15,275	5,017	13,896
PROBATION -1458	STX	FILLED	CHIEF PROBATION OFFICER	88,613	15,275	6,626	13,896
SUBTOTAL				\$ 586,219	\$ 131,898	\$ 44,726	\$ 150,645
PROCUREMENT							
PROCUREMENT -1409	STT	FILLED	PROCUREMENT ASSISTANT TRAINEE	28,392	6,872	2,172	13,896
PROCUREMENT -1409	STT	FILLED	PROCUREMENT DIRECTOR	88,796	15,275	6,793	13,896
PROCUREMENT -1409	STT	FILLED	PROCUREMENT & CONTRACTING ANALYST	100,235	15,275	7,688	13,896
PROCUREMENT -1459	STX	FILLED	PROCUREMENT & CONTRACTING ANALYST	70,647	15,275	5,405	13,896
SUBTOTAL				\$ 288,071	\$ 52,497	\$ 22,037	\$ 54,780
SECURITY DIVISION							
SECURITY DIVISION-1441	STT	FILLED	COURT SECURITY OFFICER	28,999	6,815	2,218	13,896
SECURITY DIVISION-1441	STT	FILLED	COURT SECURITY OFFICER	30,468	7,160	2,331	13,896
SECURITY DIVISION-1441	STT	FILLED	COURT SECURITY OFFICER	30,468	7,160	2,331	13,896
SECURITY DIVISION-1441	STT	FILLED	COURT SECURITY OFFICER	32,010	7,522	2,449	13,896
SECURITY DIVISION-1441	STT	FILLED	COURT SECURITY OFFICER	32,810	7,710	2,510	13,896
SECURITY DIVISION-1441	STT	FILLED	COURT SECURITY OFFICER	35,333	8,303	2,703	13,896
SECURITY DIVISION-1441	STT	FILLED	COURT SECURITY OFFICER	36,333	8,303	2,703	13,896
SECURITY DIVISION-1441	STT	FILLED	COURT SECURITY OFFICER	40,975	9,629	3,135	13,896
SECURITY DIVISION-1441	STT	FILLED	COURT SECURITY OFFICER	44,128	10,370	3,376	13,896
SECURITY DIVISION-1441	STT	FILLED	CHIEF OF COURT SECURITY	59,304	13,936	4,537	13,896

DIVISION	DISTRICT	VACANCY STATUS	POSITION TITLE	SALARY	GERS	FICA	HEALTH INSURANCE
SECURITY DIVISION-1491	STX	VACANT (TBF)	COURT SECURITY OFFICER	36,217	8,511	2,771	13,696
SECURITY DIVISION-1491	STX	FILLED	COURT SECURITY OFFICER	36,217	8,511	2,771	13,696
SECURITY DIVISION-1491	STX	FILLED	COURT SECURITY OFFICER	36,217	8,511	2,771	13,696
SECURITY DIVISION-1491	STX	FILLED	COURT SECURITY OFFICER	48,936	11,500	3,744	13,696
SUBTOTAL				\$ 527,411	\$ 123,942	\$ 40,347	\$ 191,730
TOTAL				11,059,251.44	2,413,527.29	842,813.54	2,629,440.00





Judicial Branch Administrative Office
P.O. Box 590, St. Thomas, U.S. Virgin Islands 00804
www.vicourts.org